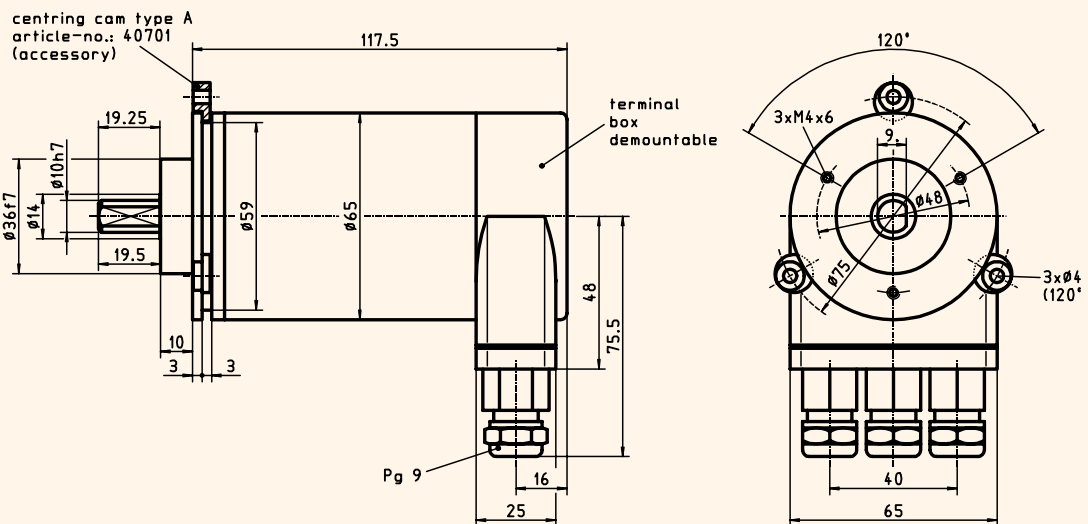
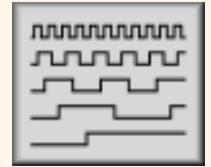


Absolute - Encoder *INTERBUS-S* ATD 3B B14 Y13



Qualities:

- Robust, single- resp. Multiturn-Absolute-Encoder
- **Programmable resolution:** up to max. 4096 steps per revolution
- **Programmable resolution:** up to max. 4096 shaft turns (only multiturn)
- **Programmable zero adjustment:** Preset - adjustment
- Centering seat $\varnothing 36$, mounting punch circle $\varnothing 48$
- Terminal-box detachable



ATD 3.. B14 Y13

drawing-no.: 026 - 31 Y13

Mechanical data:

Housing		light-alloy metal, black	
Design style	B14	B14	
Protective class	IP65	IP 65	according to DIN 40 050, IEC 529
Construction principle		LED with glas slotdisc	
max. speed (mechanical)	n_{max}	≤ 6000 rpm	
Admissible shaft load	axial	≤ 40 N	
	radial	≤ 60 N	(at shaft end)
Starting torque	at 20 ° C	≤ 2 Ncm	
Vibration	55... 2000 Hz	≤ 100 m/s ²	according to DIN IEC 68, Teil 2-6
Shock	11 ms	≤ 1000 m/s ²	according to DIN IEC 68, Teil 2-27
Moment of inertia (rotor)		approx. 25 gcm ²	
Shaft diameter	d	10 mm	
Weight		approx. 700 g	

Absolute - Encoder *INTERBUS-S*

ATD 3B B14 Y13



Electrical data:

• Steps per revolution	<i>Single- / Multiturn</i>	XX	4096 (12 Bit) steps per revolution
• Number of turns	<i>Multiturn</i>	YY	4096 (12 Bit) shaft turns
• Interface-driver			Two-wire-remote bus for INTERBUS-S, RS 422 with galvanic isolation
• Data transmission		IB	INTERBUS-S
Baud-rate		IS	programmable at BUS 300 kBaud (net), 500 kBaud (gross), incl. control- and status bytes 0.5 ms 51 dez.
• Datarefresh			11 - 27 VDC
• Identnumber			≤ 4 Watt
• Supply voltage:	U_B	Pg 9	detachable outlet with 3 x Pg 9, radial
• Loss efficiency (no load)	P_{max}	S	0 °C to + 60 °C
• Type of connection			
• Operating temperature range			

Options:

- options upon request

Accessories:

Centring cam-set type A (3 pcs.)

article-no.: 40701-3

Connection table:

X1 - 6-poles

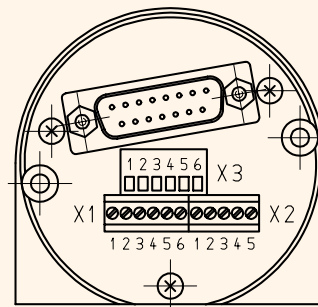
PIN - no.	signals
PIN 1 =	DO inverting
PIN 2 =	DO
PIN 3 =	DI inverting
PIN 4 =	DI
PIN 5 =	0 V (data reference potential for predecessor)
PIN 6 =	NC

X2 - 5-poles

PIN - no.	signals
PIN 1 =	NC
PIN 2 =	NC
PIN 3 =	NC
PIN 4 =	0 V
PIN 5 =	+ U_B

X3 - 6-poles

PIN - no.	signals
PIN 1 =	DO inverting
PIN 2 =	DO
PIN 3 =	DI inverting
PIN 4 =	DI
PIN 5 =	0 V (Data reference potential for successor)
PIN 6 =	RBST inverting



Ordering example:

ATD 3B	B14	Y13	12/12	IB	IS	PG 9	S	10	IP65
Absolut-Encoder ATD 3B	Design style B14	Mechanical variante Y13 = look at the drawing	Steps / rev. / no. of turn 4096 (12 Bit) steps/rev. 4096 (12 Bit) rev.	Datatransmission INTERBUS-S	Datatransmission programmable at BUS	Type of connection outlet with 3 x Pg 9, radial	Operating temperature 0 °C to +60 °C	Shaft diameter 10 mm	Protective class IP 65