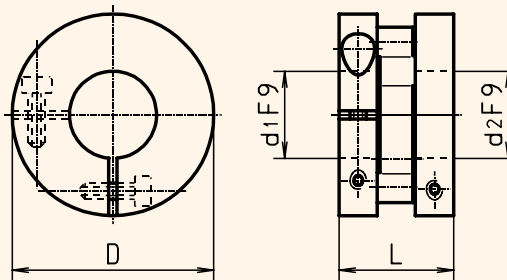


Controflex - Coupling *CPS*



CPS .. K.. / K..

	max. torque [Ncm]	Permissible radial shaft displacement [mm]	Upper speed limit [rpm]	Angular error [Grad]	Mass moment of inertia [kgcm ²]	L [mm]	d1, d2 [mm]	D [mm]	Possible mountings
CPS 25	100	0,5	13.500	1	0,02	19	6 to 12	25	K
CPS 37	300	1	13.500	1	0,1	21	6 to 20	37	K

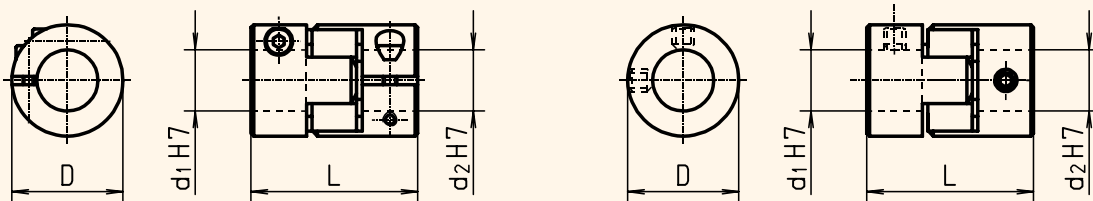
* K = clamping fastening

Ordering example:

- ***CPS 25 K10 / K6 L=19***

CPS 25, clamping fastening K, hollow shaft boring $d_1 = 10$ mm and $d_2 = 6$ mm, total length $L = 19$ mm

Claw - coupling *KK*



KK.. K.. / K..

KK.. R.. / R..

	Teeth flank initials	Hardness [ShA]	max. torque [Ncm]	Permissible radial shaft displacement [mm]	Upper speed limit [rpm]	L [mm]	d1, d2 [mm]	D [mm]	Possible mountings
KK 14	B	80	20	0,15	40.000	22	6 to 7	14	K, KSE
	N	92	20	0,1	40.000	22	6 to 7	14	K, KSE
	R	98	20	0,06	40.000	22	6 to 7	14	K, KSE
KK 20	B	80	45	0,19	28.000	30	6 to 11	20	K, R, KSE
	N	92	45	0,13	28.000	30	6 to 11	20	K, R, KSE
	R	98	45	0,08	28.000	30	6 to 11	20	K, R, KSE

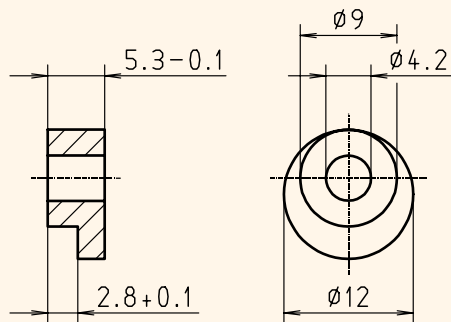
* K = clamping fastening R = radial fastening KSE = cone clamping collar fastening

Ordering example:

- ***KK 20 R6 / R10 N***

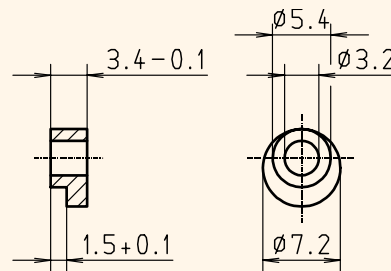
KK 20, both sides radial fastening R, hollow shaft boring $d_1 = 6$ mm and $d_2 = 10$ mm, teeth flank hardness 92 ShA,

Centring cams:



Form A

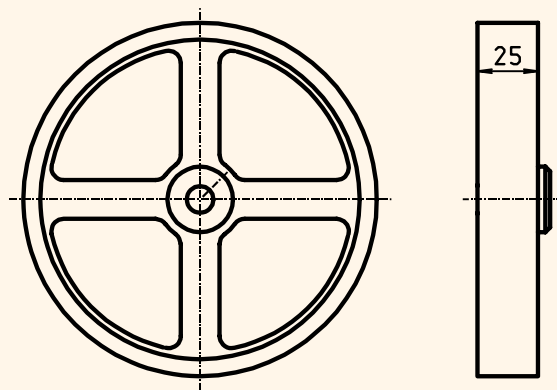
Article-no.: 40701



Form B

Article-no.: 40702

Measurement wheel:



Technical data :

Circumference	U	0.2 m, 0.5 m, 1 m, 1/5 yd, 1/2 yd, 1 ft
Hollowshaft diameter	d	7 mm, 10 mm, 11 mm
Tread		plastic, burled rubber, metal knurled