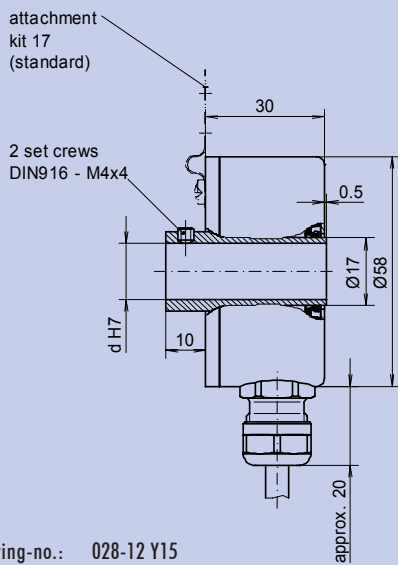
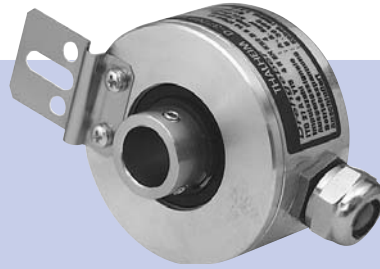


Incremental encoder *with magnetic scanning*

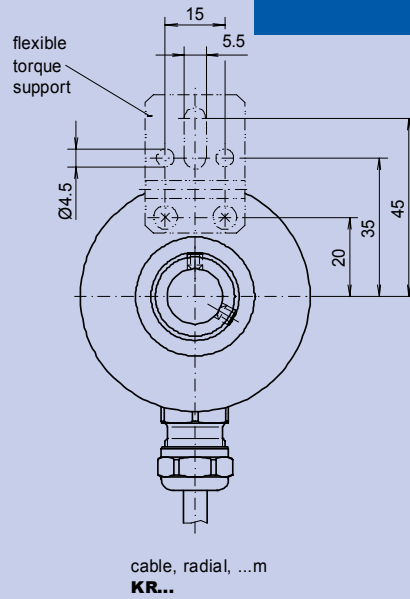
ITD 27 A 4 Y15

Features

- Low cost hollow shaft incremental encoder, with magnetic scanning
- HTL- output signals
- Cable outlet radial



drawing-no.: 028-12 Y15



Mechanical data

Design	A 4		A 4
Attachment kit	17	standard, (ref. datasheet »Attachment kit's ...«)	17
Housing	aluminium, unpainted		
Protection	IP 65	according to DIN EN 60 529	IP65
Construction principle	pole ring with magnetic scanning		
max. revolution (mechanical)	$n_{max} \leq 6000$ rpm	(observe limit frequency)	
Permissible motor-shaft play	axial ≤ 0.25 mm radial ≤ 0.1 mm		
Vibration	55... 2000 Hz ≤ 100 m/s ²	according to DIN IEC 60 068, part 2-6	
Shock	11 ms ≤ 1000 m/s ²	according to DIN IEC 60 068, part 2-27	
Hollow shaft diameter	d 14 mm	(standard), 10 mm, 12 mm possible	14
Weight	approx. 300 g		

Electrical data

Number of pulses	Z	1, 4, 8, 16, 20, 32 pulses/revolution	XXXX
Electronic version (output signals)	HTL	Push pull-output stage (short-circuit proof), supply voltage: $U_B = 8-24$ VDC (polarity protected) H output amplitude: $U_{LOW} \leq 1.5$ V, $U_{HIGH} \geq U_B - 3$ V	H
Output signals	A	1 square wave pulse train*	AX
Pulse ratio		pulse : pause = 1 : 1, $\pm 30\%$	
Output load current	I_{Load}	≤ 20 mA (per track)	
Current consumption (no-load)	I_{max}	≤ 20 mA	
Type of connection		cable, radial, 1.0 m (standard length)	KR1
Operating temperature range		-20 °C to +85 °C	S
Permissible relativ humidity		$\leq 90\%$ (condensation not permitted)	

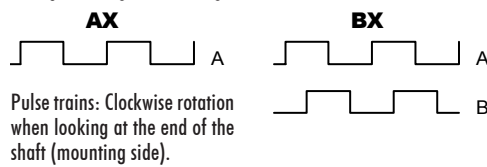
Options

Output signals	A, B	2 square wave pulse trains, electr. phase shifted $90^\circ \pm 30^\circ$	BX
Type of connection	connector	performed at cable, (ref. datasheet »Type of performed cables«)	...

Connection table

wire color	signals
green	A
grey	B
brown	+ U_B
white	0 V
transparent	shielding/housing

Output signal diagram



Ordering example

ITD 27 Incremental encoder ITD 27	A 4 Design A 4	Y15 Mechanical variant Y15 = look at the drawing	4 Number of pulses 4 pulses/revolution	H Electronic version $U_B = 8-24$ VDC HTL	BX Output signals A-, B-track	KR1 Type of connection cable, radial, 1 m	S Operating temperature -20 °C to +85 °C	14 Hollow shaft diameter 14 mm	IP65 Protection IP65	17 Attachment kit variante 17
--	-----------------------------	---	---	--	--	--	---	---	-----------------------------------	--

* ref. output signal diagram