

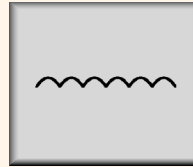
Three phase tachogenerator

TD 4... FA 4, STD 41 FA 4



Qualities:

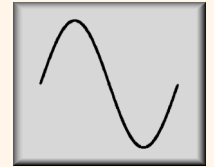
- Cost effective
- Safe to operate
- Without coupling
- Absolute maintenance - free



TD



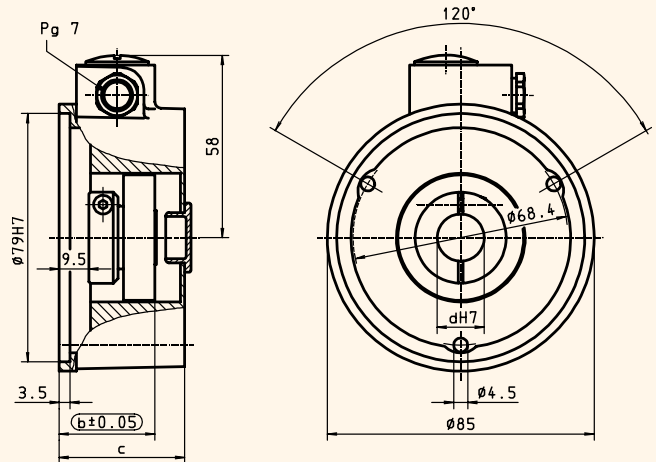
DTD



WTD

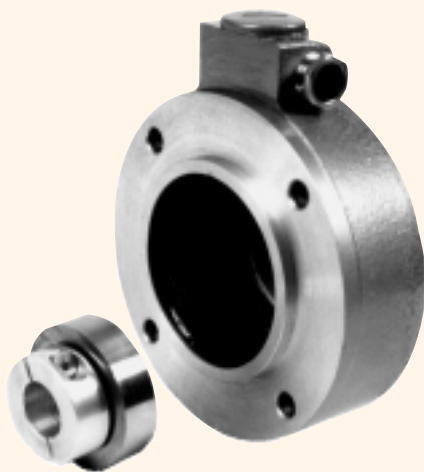


TD 4... FA 4

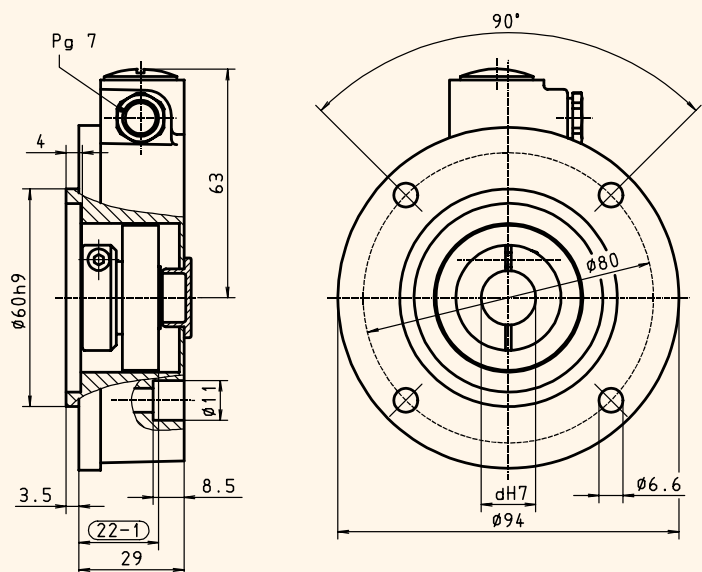


Type	V-	a	b	c
TD 41 F A4	≤ 50	27	30.5	40
TD 42 F A4	≤ 100	37	40.5	50

drawing-no.: 08 - 18



STD 41 FA 4



drawing-no.: 07 - 1

Three phase tachogenerator

TD 4... FA 4, STD 41 FA 4



Mechanical data:

Housing			light - alloy metal, unpainted
Design class			A 4
Protective class			IP 54 <i>according to DIN 40 050, IEC 529</i>
Upper speed limit		n_{max}	≤ 12.000 rpm
Rotor attachment			clamping
Hollow shaft diameter		d	15 mm (standard) (10 - 16 mm possible)
Mass moment of inertia	TD 41 ...	J	90 gcm ²
	TD 42 ...	J	100 gcm ²
Weight - housing	TD 41 FA 4		approx. 500 g
	TD 42 FA 4		approx. 700 g
	STD 41 FA 4		approx. 550 g
Weight - rotor	TD 41 FA 4		approx. 80 g
	TD 42 FA 4		approx. 150 g
	STD 41 FA 4		approx. 80 g

Electrical data:

Output voltage (no - load)	TD 41 ...	U_0	50 VDC \pm 3 %
	TD 42 ...	U_0	100 VDC \pm 3 %
Polarity			independent on rotational direction
max. output current		I_{max}	30 mA
Magnet			Al Ni Co, 8-pole, stabilized
Residual ripple			≤ 15 % peak - peak
Residual ripple frequency			400 Hz $f = 0,4 * n$
Linearity error		$F_{Regulation}$	≤ 1 %
Regulation range lower limit	TD 41 ...	n_R	20 rpm
	TD 42 ...	n_R	10 rpm
Temperature drift	(magnet)		- 0,2 % pro 10 K
Type of connection			terminal box, 2- pole
Isolation class			E
Operating temperature range			- 30 °C to + 100 °C
Maintenance			maintenance - free

referenced to 1000 rpm

Options:

• Output voltage	(no- load)		< 50 VDC or < 100 VDC
• Output voltage	(no- load)		< 60 VDC or < 120 VDC
• Balancing to rated voltage			
• Three phase output		DTD	only with cable
• alternating current output		WTD	with or without cable
• Double winding			only with cable
• Enhanced protective class			
• Hollow shaft diameter		d	14 mm, 16 mm